



Impact of COVID-19 on the Local Jail Population, January-June 2020

Todd D. Minton, Zhen Zeng, Ph.D., and Laura M. Maruschak, *BJS Statisticians*

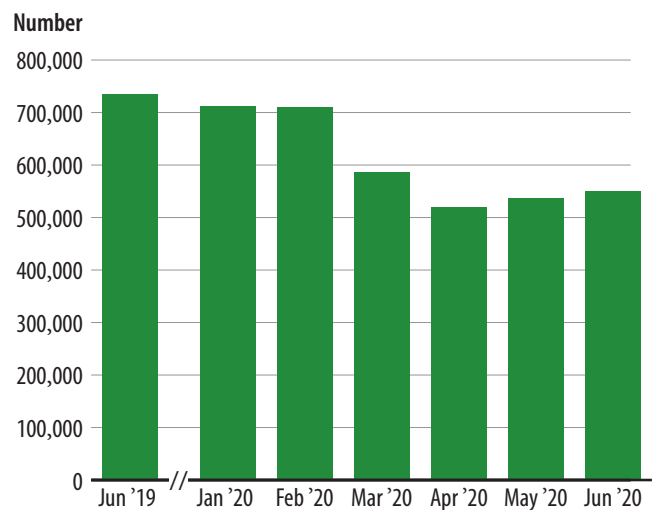
Local jails in the United States experienced a large decline (down 185,400 inmates) in their inmate populations from June 30, 2019 to June 30, 2020, which can be attributed mainly to the COVID-19 pandemic (figure 1 and table 1). The inmate population confined in local jails was 549,100 at the end of June 2020, down from 734,500 at the end of June 2019. The midyear 2020 inmate population was the lowest since 1996, when 518,500 inmates were confined in local jails (not shown in tables).

The impact of COVID-19 on local jails began in March 2020, with a drop of 18% in the inmate population between the end of February and the end of March, followed by an 11% drop by the end of April. By the last weekday in April 2020, the number of jail inmates dropped to a low of 519,500. By the end of May 2020, the population increased about 3% and was up another 2% by the end of June 2020.

The decline in the inmate population since midyear 2019 resulted from both a reduction in admissions to jails and expedited releases in response to the COVID-19 pandemic from March to June 2020.

FIGURE 1

Number of inmates confined in local jails on the last weekday in June 2019 and the last weekday of each month from January to June 2020



Note: See table 1 for counts and appendix table 1 for standard errors. Source: Bureau of Justice Statistics, Census of Jails, 2019; and Annual Survey of Jails, 2020.

HIGHLIGHTS

- From March to June 2020, about 208,500 inmates received expedited release in response to COVID-19.
- During the pandemic, jail facilities became less crowded, as indicated by the decrease in occupied bed space from 81% at midyear 2019 to 60% at midyear 2020.
- The number of inmates held for a misdemeanor declined about 45% since midyear 2019, outpacing the decline in the number of inmates held for a felony (down 18%).
- The percentage of inmates held for a felony increased from 70% at midyear 2019 to 77% at midyear 2020.
- From March to June 2020, jails conducted 215,360 inmate COVID-19 tests. More than 11% of these tests were positive.
- Jails in counties with confirmed residential COVID-19 infection rates of 1% or more tested nearly 21% of persons admitted to their jails from March to June 2020.
- From March to June 2020, nearly 5% (10,850) of all local jail staff (233,220) tested positive for COVID-19.

Local jails reported 8.7 million admissions during the 12-month period ending June 30, 2020, which was about 16% lower than the 10.3 million admissions during the 12-month period ending June 30, 2019 (appendix table 10).

Findings in this report are based on the 2019 Census of Jails (COJ) and the 2020 Annual Survey of Jails (ASJ). The Bureau of Justice Statistics (BJS) periodically conducts the COJ, collecting a complete enumeration of local jail facilities. In the years between COJ administration, BJS conducts the ASJ, a national survey administered to a sample of 897 jail jurisdictions, to provide nationally representative statistics on the number and characteristics of local jails, inmates, and staff. See *Methodology* for the ASJ sample design.

This special report is the first of two that describe the impact of COVID-19 on the local jail population. BJS will release a final report that will include results from July to December 2020.

TABLE 1
Number of inmates confined in local jails on the last weekday in June 2019 and the last weekday of each month from January to June 2020

Last weekday in—	Number
June 2019*	734,500
January 2020	711,900 †
February 2020	710,300 †
March 2020	585,900 †
April 2020	519,500 †
May 2020	536,600 †
June 2020	549,100 †

Note: See appendix table 1 for standard errors.

*Comparison month.

†Difference with comparison month is significant at the 95% confidence level.

Source: Bureau of Justice Statistics, Census of Jails, 2019; and Annual Survey of Jails, 2020.

2020 Annual Survey of Jails Special Addendum on Coronavirus (COVID-19)

In response to the COVID-19 pandemic, BJS added a special addendum to the 2020 and 2021 ASJ to measure the impact of this public health emergency on local jails. In designing the addendum, BJS solicited comments and suggestions from a correctional health expert and jail administrators regarding data availability and reporting capabilities; question design and order; and estimated burden.

Below is a summary of the questions from this survey. For the full questionnaire, go to <https://www.bjs.gov/index.cfm?ty=dcdetail&iid=261#Questionnaires>.

- Last weekday inmate counts for every month from January to May 2020.
- The number of inmates who received expedited release due to COVID-19 from March 1, 2020 to June 30, 2020.
- The number of COVID-19 tests conducted and the number of positive tests from January 1, 2020 to June 30, 2020.
- The number of unique individuals who tested positive for COVID-19 from March 1, 2020 to June 30, 2020.
- The number of staff who tested positive for COVID-19 from March 1, 2020 to June 30, 2020.
- Total, confirmed, and suspected COVID-19 inmate deaths and staff deaths from March 1, 2020 to June 30, 2020.
- Number of total inmate and staff COVID-19 deaths that were based on a medical examiner’s or coroner’s evaluation (such as an autopsy, postmortem exam, or review of medical records).

Terms and definitions – COVID-19

Confirmed death—Deaths where COVID-19 was the cause of death or a significant contributor of death as determined by a positive test for coronavirus before or after death.

County residents’ confirmed infection rate—County-level confirmed COVID-19 cases as a percentage of the county population.

COVID-19 test—A viral test for coronavirus disease. This is not a serology or antibody test.

Expedited releases—All inmates released to limit inmate risk and exposure, or due to coronavirus-related understaffing, court orders, and legislative mandates.

Suspected death—Deaths where coronavirus was the suspected cause of death or a significant contributor to the death, based on the person having symptoms of COVID-19 but no positive test for coronavirus.

Terms and definitions – General

Admissions—All persons booked into and housed in jail facilities by a formal legal document and the authority of the courts or some other official agency, including repeat offenders booked on new charges and persons sentenced to weekend programs or entering the facility for the first time. They exclude inmates reentering the facility after an escape, work release, medical appointment, stay in a treatment facility, and bail or court appearance.

Average daily population (ADP)—The sum of inmates in jail each day for a year, divided by the number of days in the year.

Jail—A confinement facility generally operated under the authority of a sheriff, police chief, or county or city administrator. A small number of jails are privately operated. Regional jails include two or more jail jurisdictions with a formal agreement to operate a jail facility. Facilities include jails, detention centers, county or city correctional centers, special jail facilities (such as medical or treatment centers and pre-release centers), and temporary holding or lockup facilities that are part of a facility’s combined function. Jails are intended for adults but can hold juveniles before or after their cases are adjudicated.

Jails—

- hold inmates sentenced to jail facilities who usually have a sentence of one year or less
- receive individuals pending arraignment and hold them as they await trial, conviction, or sentencing
- readmit probation, parole, and bail-bond violators and absconders
- detain juveniles pending their transfer to juvenile authorities
- hold mentally ill persons pending their movement to appropriate mental-health facilities
- hold individuals for the military, for protective custody, as witnesses for courts, and for contempt of court
- release convicted inmates to the community on completion of sentence
- transfer inmates to federal, state, or other authorities
- house inmates for federal, state, or other authorities due to crowding of their facilities
- operate community-based programs as alternatives to incarceration.

Jail incarceration rate—The number of inmates held in the custody of local jails, per 100,000 U.S. residents.

Jail jurisdiction—A county (parish in Louisiana) or municipal government that administers one or more

local jails and represents the entity responsible for managing jail facilities under its authority. Most jail jurisdictions consist of a single facility, but some have multiple facilities or multiple facility operators.

Jail regions— Excludes the combined jail and prison systems in Alaska, Connecticut, Delaware, Hawaii, Rhode Island, and Vermont. Includes 15 locally operated jails in Alaska.

Northeast: Maine, Massachusetts, New Hampshire, New Jersey, New York, and Pennsylvania.

Midwest: Illinois, Indiana, Iowa, Kansas, Michigan, Minnesota, Missouri, Nebraska, North Dakota, Ohio, South Dakota, and Wisconsin.

South: Alabama, Arkansas, District of Columbia, Florida, Georgia, Kentucky, Louisiana, Maryland, Mississippi, North Carolina, Oklahoma, South Carolina, Tennessee, Texas, Virginia, and West Virginia.

West: Alaska, Arizona, California, Colorado, Idaho, Montana, Nevada, New Mexico, Oregon, Utah, Washington, and Wyoming.

Midyear population—The number of inmates held in custody on the last weekday in June.

Percent of capacity occupied at midyear—The jail population at midyear, divided by the rated capacity.

Persons under jail supervision but not confined—All persons in community-based programs operated by jail facilities, including electronic monitoring, house arrest, community service, day reporting, and work programs. They exclude persons on pre-trial release who are not in community-based programs run by jails; persons under supervision of probation, parole, or other agencies; inmates on weekend programs; and inmates who participate in work-release programs and return to jail at night.

Rated capacity—The number of beds or inmates assigned by a rating official to a facility, excluding separate temporary holding-areas.

Releases—Persons released after a period of confinement (e.g., sentence completions, bail or bond releases, other pre-trial releases, transfers to other jurisdictions, and deaths). Releases include persons who have completed their weekend program and who are leaving the facility for the last time. They exclude temporary discharges, such as work releases, medical appointments, stays in treatment centers, court appearances, furloughs, day reporting, and transfers to other facilities within the jail jurisdiction.

Reporting unit—Most jail jurisdictions consist of a single facility, but some have multiple facilities, or multiple facility operators, called reporting units.

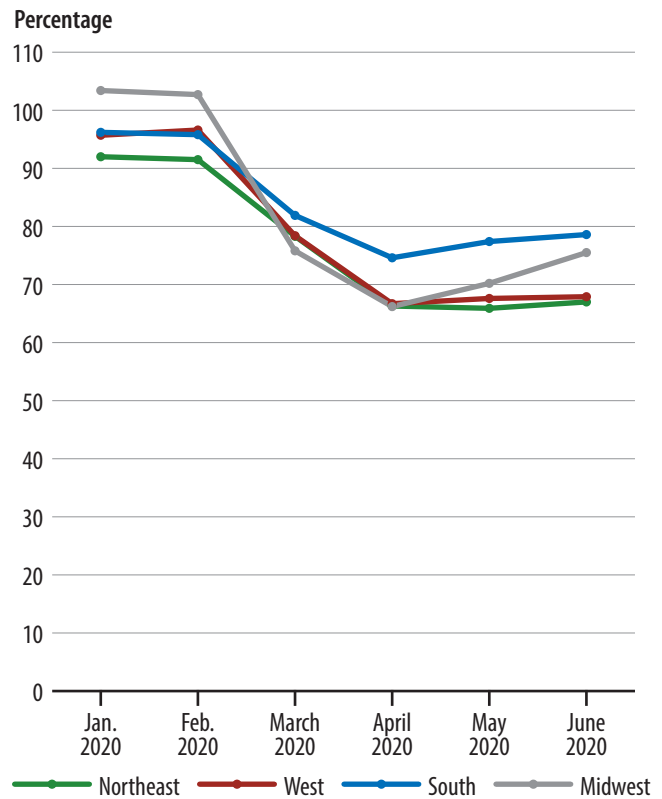
By midyear 2020, local jails cut the size of the midyear 2019 population by nearly a quarter

In January 2020, the local jail population represented 97% of the midyear 2019 jail population (table 2). By midyear 2020, the size of the population declined to nearly 75% of the 2019 population. This decline is attributable to the pandemic-related reduction in admissions and expedited releases from March to June 2020. Jails in the Midwest and West reported the largest drop from January 2020 (103% and 96% of the midyear 2019 jail population, respectively) to June 2020 (76% and 68%, respectively) (figure 2); jails in the Northeast reported the lowest percentage (67%) of their midyear 2019 population, similar to jails in the West.

By April 2020, the jail population declined below 70% of the midyear 2019 population in most regions

During the 6-month period from January to June 2020, the size of the local jail population in the Midwest dropped to a low during April (66% of the midyear 2019 population), and increased in May (70%) and June (76%). Similarly, jails in the South experienced growth from April (75% of the 2019 population) to June (79% of the June 30, 2019 population). Among jails in the West and Northeast, the size of the population fell below 70% of the midyear 2019 population from April to June 2020. By comparison, the jail population in the West and Northeast remained stable during this 3-month period.

FIGURE 2
Local jail population as a percentage of the June 2019 jail population, by region, January-June 2020



Note: Data are based on the inmate population confined on the last weekday each month. See table 2 for percentages and appendix table 2 for standard errors.
Source: Bureau of Justice Statistics, Census of Jails, 2019; and Annual Survey of Jails, 2020.

TABLE 2
Local jail population as a percentage of the June 2019 jail population, by region, January-June 2020

Region	June 2019*	January 2020	February 2020	March 2020	April 2020	May 2020	June 2020
U.S. total	100%	96.9% †	96.7% †	79.8% †	70.7% †	73.1% †	74.8% †
Midwest	100%	103.4	102.7	75.8 †	66.2 †	70.2 †	75.5 †
South	100%	96.2 †	95.8 †	81.9 †	74.6 †	77.4 †	78.6 †
West	100%	95.7	96.6	78.4 †	66.7 †	67.6 †	67.9 †
Northeast	100%	92.0	91.5	78.3 †	66.3 †	65.9 †	67.0 †

Note: Data are based on the inmate population confined on the last weekday of each month. See appendix table 2 for standard errors.

*Comparison month.

†Difference with comparison month is significant at the 95% confidence level.

Source: Bureau of Justice Statistics, Census of Jails, 2019; and Annual Survey of Jails, 2020.

Jails expedited inmate releases in response to the COVID-19 pandemic

From March to June 2020, nearly 9% (208,500) of all persons admitted to local jails received expedited release in response to COVID-19 (table 3).¹ Expedited releases were granted to limit inmate risk and exposure, or due to coronavirus-related understaffing, court orders, and legislative mandates.

About 12% (50,000) of all persons admitted to jails in counties with confirmed residential COVID-19 infection rates of less than 0.2% received an expedited release from jail from March to June 2020.

Around 16% (18,800) of all persons admitted to jails in the Northeast received expedited release from jail. About 8% of all persons admitted to jails in the South (89,200) and West (40,600) received expedited release in response to COVID-19.

Smaller jail jurisdictions (holding less than 250 inmates) reported the largest percentage of inmates receiving expedited release (11%, or 88,900 inmates). Nearly 7% (20,800 inmates) of persons admitted to jails in the largest jail jurisdictions (holding 2,500 or more inmates) received expedited release.

¹The number of admissions from March 2020 to June 2020 was used as the best estimate of the number of jail inmates who could have received expedited release. Because turnover is high in jails, the one-day count of the jail population at the end of February 2020 was not factored into this pool of inmates as the expedited release response to COVID-19 was not widespread until March 2020.

TABLE 3

Admissions and expedited releases, by size of jail jurisdiction, region, and county COVID-19 infection rate, March 1-June 30, 2020

	Number of admissions ^a	Expedited releases ^b	
		Number	As percentage of admissions
Total	2,387,000	208,500	8.7%
Jail jurisdiction size (ADP)^c			
Less than 50 inmates	183,000	20,000	11.0%
50-99	182,000	24,900	13.7
100-249	425,000	44,000	10.4 †
250-499	392,000	25,900	6.6
500-999	447,000	36,600	8.2 †
1,000-2,499	439,000	36,200	8.3 †
2,500 or more*	320,000	20,800	6.5
Region			
Midwest*	551,000	59,900	10.9%
South	1,193,000	89,200	7.5
West	521,000	40,600	7.8
Northeast	121,000	18,800	15.5 †
County residents' confirmed infection rate through June 30, 2020^d			
Less than 0.2%*	430,000	50,000	11.6%
0.2%-0.39%	524,000	33,000	6.3 †
0.4%-0.59%	515,000	51,300	10.0
0.6%-0.99%	552,000	43,200	7.8
1% or more	366,000	30,900	8.5

Note: See appendix table 3 for standard errors.

*Comparison group.

†Difference with comparison group is significant at the 95% confidence level.

^aAdmissions from March 2020 to June 2020 were estimated based on reported annual admissions from July 1, 2019 to June 30, 2020, and on the confined population on the last weekday in June 2019 and from January 2020 to June 2020. See *Methodology*.

^bExpedited releases were granted to limit inmate risk and exposure, or due to coronavirus-related understaffing, court orders, and legislative mandates.

^cBased on the average daily population (ADP) from July 2019 to June 2020.

^dCounty-level cumulative confirmed COVID-19 cases as a percentage of the county population through June 30, 2020.

Source: Bureau of Justice Statistics, Annual Survey of Jails, 2020; and USAFacts.org.

The highest inmate COVID-19 testing rate was in jails located in counties with the highest confirmed residential COVID-19 infection rates

During the 4-month period from March to June 2020, nearly 2.4 million persons were admitted to local jails (table 4). Over the same period, local jails conducted about 215,360 COVID-19 tests, equivalent to 9% of all admissions. More than 11% (or 24,550) of these tests were positive for COVID-19. Of these positive tests, about 23,020 were from unique individuals.^{2,3}

²Multiple positive results for the same individual were counted once.

³The number of admissions from March 2020 to June 2020 was used as a best estimate of the number of jail inmates who could have been tested for COVID-19 over the same period. Because turnover is high in jails, the one-day count of the jail population at the end of February 2020 was not factored into this pool of inmates, as testing was not prevalent until March 2020.

Jails located in counties with confirmed residential COVID-19 infection rates of 1% or higher reported that nearly 21% of persons admitted to their jails were tested. This group of jails reported that about 14% of their tests were positive. Among jails located in counties with less than 0.2% confirmed residential infection rates, about 4% of persons admitted to their jails from March to June 2020 were tested. This group of jails reported that less than 2% of their tests were positive.

Jails in the South accounted for the largest number of admissions to jails from March to June 2020. Over 7% of persons admitted to jails in the South were tested for COVID-19, and about 12% of those tests were positive. Jails located in the Northeast tested 21% of all persons admitted to their jails from March to June 2020, followed by jails in the West (14%), South (7%), and

TABLE 4
COVID-19 testing and positive cases among local jail inmates, by size of jail jurisdiction, region, and county infection rate, March 1-June 30, 2020

	Admissions ^a	Total tests conducted ^b	Number of positive tests ^b	Number of persons who tested positive ^c	Percent of admissions that were tested	Percent of tests that were positive
Total	2,387,000	215,360	24,550	23,020	9.0%	11.4%
Jail jurisdiction size (ADP)^d						
Less than 50 inmates	183,000	4,220	320	320	2.3% †	7.5% †
50-99	182,000	6,570	250	250	3.6 †	3.7 †
100-249	425,000	14,240	1,330	1,320	3.4 †	9.3 †
250-499	392,000	23,910	2,420	2,240	6.1 †	10.1 †
500-999	447,000	42,080	3,660	3,250	9.4 †	8.7 †
1,000-2,499	439,000	53,610	6,630	5,950	12.2 †	12.4 †
2,500 or more*	320,000	70,720	9,960	9,690	22.1	14.1
Region						
Midwest*	551,000	31,480	2,650	2,440	5.7%	8.4%
South	1,193,000	88,740	10,990	10,380	7.4 †	12.4 †
West	521,000	70,200	7,970	7,260	13.5 †	11.3 †
Northeast	121,000	24,940	2,950	2,940	20.6 †	11.8 †
County residents' confirmed infection rate through June 30, 2020^e						
Less than 0.2%*	430,000	16,780	270	260	3.9%	1.6%
0.2%-0.39%	524,000	40,360	3,830	3,580	7.7 †	9.5 †
0.4%-0.59%	515,000	31,560	3,690	3,300	6.1 †	11.7 †
0.6%-0.99%	552,000	51,060	6,200	5,690	9.2 †	12.1 †
1% or more	366,000	75,590	10,560	10,190	20.7 †	14.0 †

Note: See appendix table 4 for standard errors.

*Comparison group.

†Difference with comparison group is significant at the 95% confidence level.

^aAdmissions from March 2020 to June 2020 were estimated based on reported annual admissions from July 1, 2019 to June 30, 2020 and on the confined population on the last weekday in June 2019 and from January 2020 to June 2020. See *Methodology*.

^bInmates may be tested more than once and may account for multiple positive tests.

^cIndividuals may test positive for COVID-19 multiple times. Multiple positive results for the same individual were counted only once.

^dBased on the average daily population (ADP) from July 2019 to June 2020.

^eCounty-level cumulative confirmed COVID-19 cases as a percentage of the county population through June 30, 2020.

Source: Bureau of Justice Statistics, Annual Survey of Jails, 2020; and USAFacts.org.

jails in the Midwest (6%). Similar to jails in the South, about 12% of tests in the Northeast were positive, followed by jails in the West (11%) and jails in the Midwest (8%).

The largest jail jurisdictions tested a higher proportion of their inmates than small jails

The largest jail jurisdictions (those holding 2,500 or more inmates) tested about 22% of persons admitted to their facilities from March to June 2020. Of the 70,720 tests conducted among these jail jurisdictions, nearly 14% (9,960 tests) were positive for COVID-19. The smallest jail jurisdictions (those holding less than 50 inmates) tested about 2% of persons admitted to their facilities during this period. This group of jails reported that about 8% of their tests were positive.

The 50 largest jail jurisdictions accounted for more than half of positive COVID-19 tests of inmates in jails nationwide

The 50 largest jail jurisdictions tested nearly 19% (88,900) of all persons admitted to their jails from March to June 2020 (table 5).⁴ This

⁴Data were estimated for six of the largest 50 jail jurisdictions that did not report data on inmate COVID-19 testing.

group of jails accounted for 41% of all inmate COVID-19 tests in jails nationwide and 52% of all positive tests nationwide.

Of the 44 largest jail jurisdictions reporting data on inmate COVID-19 testing, five (City of Philadelphia in Pennsylvania, Denver County in Colorado, Delaware County in Pennsylvania, Los Angeles County in California, and Cook County in Illinois) tested more than 50% of all persons admitted to their jails from March to June 2020. In total, 23 of the 44 largest jail jurisdictions exceeded the national jail-testing rate (9%) for COVID-19.

In 26 of the 44 reporting jurisdictions, the rate of positive COVID-19 tests exceeded the national rate (11.4% of all tests). From March to June 2020, 2 of the 44 jail jurisdictions that tested inmates (York County in Pennsylvania and El Paso County in Colorado) reported no positive tests. However, El Paso County (0.3%) tested a small portion of persons admitted to their facilities from March to June 2020.

TABLE 5
Inmate population change and inmate and staff COVID-19 testing and cases in the 50 largest local jail jurisdictions, March-June 2020

	Inmates in custody ^a			Inmate tests ^b				Staff tests ^c	
	Number in 2019	Number in 2020	Percent change	Total tests conducted	Percent of admissions that were tested	Number of positive tests	Percent of tests that were positive	Number who tested positive	Percent who tested positive
U.S. total ^d	734,500	549,100	-25.2%	215,360	9.0%	24,550	11.4%	10,850	4.7%
50 largest local jail jurisdictions									
Estimated ^d	180,700	134,200	-25.7%	88,900	18.7%	12,670	14.3%	4,570	6.7%
Reported	173,966	125,949	:	77,087	:	11,471	:	4,277	:
Los Angeles County, CA	17,385	12,045	-30.7	13,197	57.8	2,640	20.0	292	6.3
Harris County, TX	8,883	8,517	-4.1	4,401	22.4	1,120	25.4	366	6.9
Maricopa County, AZ	7,873	4,501	-42.8	2,837	13.3	804	28.3	131	5.5
New York City, NY	7,341	3,927	-46.5	/	/	/	/	1,432	14.7
San Diego County, CA	5,959	3,650	-38.7	1,681	9.3	18	1.1	12	0.6
Cook County, IL	5,666	4,617	-18.5	7,477	56.6	776	10.4	382	10.4
San Bernardino County, CA	5,623	4,553	-19.0	409	2.0	159	38.9	33	2.5
Orange County, CA	5,480	3,070	-44.0	2,113	18.4	403	19.1	30	2.0
Dallas County, TX	4,817	5,125	6.4	1,058	6.1	563	53.2	6	0.3
Shelby County, TN	4,776	3,429	-28.2	1,504	17.5	280	18.6	153	12.3
Philadelphia City, PA	4,670	3,872	-17.1	4,540	76.6	229	5.0	199	10.1
Miami-Dade County, FL	4,302	3,271	-24.0	746	5.8	262	35.1	210	7.4
Tarrant County, TX	4,144	4,008	-3.3	565	3.8	215	38.1	67	7.0
Bexar County, TX	3,963	3,620	-8.7	4,164	25.5	518	12.4	86	8.7
Riverside County, CA	3,796	3,140	-17.3	3,418	24.0	271	7.9	/	/

Continued on next page

TABLE 5 (continued)**Inmate population change and inmate and staff COVID-19 testing and cases in the 50 largest local jail jurisdictions, March-June 2020**

	Inmates in custody ^a			Inmate tests ^b				Staff tests ^c	
	Number in 2019	Number in 2020	Percent change	Total tests conducted	Percent of admissions that were tested	Number of positive tests	Percent of tests that were positive	Number who tested positive	Percent who tested positive
Broward County, FL	3,758	2,878	-23.4	294	3.5	56	19.0	13	0.9
Clark County, NV	3,749	2,464	-34.3	5,227	26.1	93	1.8	36	2.9
Sacramento County, CA	3,546	2,515	-29.1	1,182	9.8	9	0.8	14	2.0
Hillsborough County, FL ^e	3,302	/	/	/	/	/	/	/	/
Santa Clara County, CA	3,200	2,102	-34.3	2,036	33.5	40	2.0	16	1.6
Jacksonville City, FL	3,199	2,791	-12.8	/	/	/	/	/	/
Fresno County, CA	3,090	2,191	-29.1	1,948	26.6	598	30.7	42	7.1
Pinellas County, FL	3,019	2,144	-29.0	63	0.7	15	23.8	28	2.6
Fulton County, GA ^e	2,945	/	/	/	/	/	/	/	/
Allegheny County, PA	2,720	1,996	-26.6	205	6.0	46	22.4	17	2.1
Polk County, FL ^{e,f}	/	/	/	/	/	/	/	/	/
Gwinnett County, GA	2,603	1,872	-28.1	312	4.1	18	5.8	12	1.3
Orange County, FL	2,530	2,149	-15.1	881	8.9	8	0.9	47	2.9
Alameda County, CA	2,458	1,733	-29.5	1,409	15.6	65	4.6	37	8.5
El Paso County, TX	2,279	2,030	-10.9	215	2.6	79	36.7	13	2.0
Marion County, IN	2,204	1,756	-20.3	755	10.8	177	23.4	11	1.4
Southwest Virginia Regional Jail Authority, VA	2,181	1,703	-21.9	0	0.0	0	/	0	0.0
Cuyahoga County, OH	2,179	1,161	-46.7	1,464	23.1	162	11.1	40	5.4
Davidson County, TN	2,168	1,743	-19.6	981	12.8	218	22.2	40	5.1
Salt Lake County, UT	2,153	1,179	-45.2	147	2.1	23	15.6	34	4.6
Franklin County, OH	2,124	1,673	-21.2	130	2.0	29	22.3	33	5.4
Travis County, TX	2,057	1,778	-13.6	340	3.9	9	2.6	29	2.8
Clayton County, GA	2,055	1,998	-2.8	200	3.0	40	20.0	21	11.5
King County, WA ^f	/	1,312	/	235	3.3	8	3.4	16	2.3
Palm Beach County, FL	2,045	1,580	-22.7	207	2.6	58	28.0	36	4.1
Denver County, CO	2,044	974	-52.3	4,692	65.9	648	13.8	58	8.2
Milwaukee County, WI	2,027	1,362	-32.8	1,761	22.0	139	7.9	15	2.6
Cobb County, GA ^e	2,022	/	/	/	/	/	/	/	/
Essex County, NJ	2,021	1,778	-12.0	2,422	48.2	499	20.6	102	15.0
El Paso County, CO	2,020	1,316	-34.9	16	0.3	0	0.0	7	1.5
York County, PA	2,013	1,214	-39.7	151	7.1	0	0.0	0	0.0
Dekalb County, GA ^f	/	1,217	/	117	1.6	25	21.4	44	8.4
Kern County, CA	1,892	1,769	-6.5	145	1.9	23	15.9	24	5.6
Chatham County, GA	1,857	1,207	-35.0	370	11.0	4	1.1	4	1.0
Delaware County, PA	1,828	1,019	-44.3	1,072	57.8	124	11.6	89	18.6

Note: Jail jurisdictions are listed in order of their confined inmate population at midyear 2019. Data were estimated for jail jurisdictions that did not respond in 2019. Most jail jurisdictions consist of a single facility, but some have multiple facilities, or multiple facility operators, called reporting units (RU). If at least one RU responded, the jail jurisdiction is counted as a responding jail jurisdiction and data were estimated for the non-reporting RU in that jail jurisdiction. For 2020, data were estimated for one RU in Marion County, IN, Davidson County, TN, and Franklin County, OH, that did not report on the number of confined inmates at midyear 2020, the number of inmates tested for COVID-19 and positive tests, or the number of staff that tested positive for COVID-19. Data were estimated for one RU in Sacramento County, CA, that did not report on the number of staff that tested positive for COVID-19. For 2019, data were estimated for one RU in El Paso County, TX, Gwinnett County, GA, and Milwaukee County, WI, that did not report on the number of confined inmates at midyear 2019.

/Not reported.

:Not calculated because the numerator and denominator are not based on the same jail jurisdictions.

^aNumber of inmates confined on the last weekday in June.

^bInmates may be tested more than once and may account for multiple positive tests.

^cIncludes deputies, monitors, and other custody staff who spend more than 50% of their time with the incarcerated population, and administrators, clerical and maintenance staff, educational staff, professional and technical staff, and other unspecified staff who spend more than 50% of their time in the facility. Multiple positive results for the same employee were counted only once. The 2020 Annual Survey of Jails (ASJ) did not capture the number of staff who were tested for COVID-19, due to potential employee testing practices (i.e., tests conducted in jail versus employees who tested during their personal time).

^dData were adjusted for survey and item non-response. See *Methodology* for non-response estimation procedures. Imputed values were used to calculate aggregate statistics but are not displayed for individual jail jurisdictions in this table.

^eDid not respond or provide complete data to the 2020 ASJ.

^fDid not respond to the 2019 Census of Jails.

Source: Bureau of Justice Statistics, Census of Jails, 2019; and Annual Survey of Jails, 2020.

From March to June 2020, nearly 5% of jail staff tested positive for COVID-19

During the 4-month period from March to June 2020, nearly 5% (10,850) of the 233,220 staff employed in local jails tested positive for COVID-19 (table 6).⁵

During this period, nearly 8% of staff employed in jails located in counties with the highest (1% or more) confirmed residential COVID-19 infection rates were more likely to test positive than staff (1%) in jails located in counties with the lowest (less than 0.2%) confirmed residential infection rates.

Staff employed in jails located in the Northeast (7%) were nearly three times as likely to test positive for COVID-19 as staff in Midwest jails (3%). Jails located in the South (4%) and West (5%) also reported staff positivity rates higher than jails in the Midwest from March to June 2020.

The largest jail jurisdictions reported the highest percentage of staff who tested positive for COVID-19 from March to June 2020

The largest jail jurisdictions (those holding 2,500 or more inmates) accounted for 1% of all jails nationwide in 2020 and reported the most staff (3,960) who tested positive for COVID-19 and the highest percentage of positive tests (7%). Jail jurisdictions holding fewer than 500 inmates had 2,500 positive staff tests, about 3% of their staff. This group of jails accounted for nearly 90% of all jail jurisdictions nationwide (not shown in tables).

From March to June 2020, the 50 largest jail jurisdictions accounted for about 42% of all jail staff (4,570 of 10,850) who tested positive for COVID-19 nationwide.⁶ The percentage of staff who tested positive for COVID-19 exceeded the national rate (4.7%) in 21 of the 44 largest jail jurisdictions that reported data on staff COVID-19 cases. Among these 21 jail jurisdictions, seven (Delaware County in Pennsylvania, Essex County in New Jersey, New York City in New York, Shelby County in Tennessee, Clayton County in Georgia, Cook County in Illinois, and the City of Philadelphia in Pennsylvania) reported staff positivity rates that were more than twice the national average.

⁵The survey did not capture the number of staff who were tested for COVID-19, due to potential difficulties in measuring employee-testing practices (i.e., tests conducted in jail versus employees who tested during their personal time).

⁶Data were estimated for six of the 50 largest jail jurisdictions that did not report data on staff COVID-19 testing.

TABLE 6

COVID-19 positive tests among local jail staff, by size of jail jurisdiction, region, and county infection rate, March 1-June 30, 2020

	Number of staff at midyear 2020 ^a	Staff positive tests ^b	
		Number	Percent
Total	233,220	10,850	4.7%
Jail jurisdiction size (ADP)^c			
Less than 50 inmates	15,090	320	2.1% †
50-99	13,390	420	3.1 †
100-249	29,740	860	2.9 †
250-499	31,670	900	2.8 †
500-999	46,090	2,270	4.9 †
1,000-2,499	43,680	2,120	4.9 †
2,500 or more*	53,550	3,960	7.4
Region			
Midwest*	41,370	1,090	2.6%
South	105,330	4,560	4.3 †
West	43,590	2,170	5.0 †
Northeast	42,930	3,020	7.0 †
County residents' confirmed infection rate through June 30, 2020^d			
Less than 0.2%*	32,360	440	1.3%
0.2%-0.39%	39,670	1,110	2.8 †
0.4%-0.59%	42,270	2,040	4.8 †
0.6%-0.99%	53,850	2,180	4.1 †
1% or more	65,060	5,080	7.8 †

Note: See appendix table 5 for standard errors.

*Comparison group.

†Difference with comparison group is significant at the 95% confidence level.

^aIncludes deputies, monitors, and other custody staff who spend more than 50% of their time with the incarcerated population, and administrators, clerical and maintenance staff, educational staff, professional and technical staff, and other unspecified staff who spend more than 50% of their time in the facility.

^bMultiple positive results for the same employee were counted only once. The 2020 Annual Survey of Jails did not capture the number of staff who were tested for COVID-19, due to potential employee testing practices (i.e., tests conducted in jail versus employees who tested during their personal time).

^cBased on the average daily population (ADP) from July 2019 to June 2020.

^dCounty-level cumulative confirmed COVID-19 cases as a percentage of the county population through June 30, 2020.

Source: Bureau of Justice Statistics, Annual Survey of Jails, 2020; and USAFacts.org.

Inmate and staff COVID-19-related deaths

During the 4-month period from March to June 2020, about 89% (841 reporting units) of the 943 jail reporting units sampled in the Annual Survey of Jails (ASJ) reported data on the number of deaths among inmates and staff that were related to COVID-19. These reports were based on a medical examiner's or coroner's evaluation (such as an autopsy, a postmortem exam, or a review of medical records).⁷ These 841 jail reporting units accounted for about 69% (376,500) of the total inmate population and nearly 68% (160,500) of all staff employed in local jails at midyear 2020 (table 7). The Bureau of Justice Statistics (BJS) did not estimate the number of inmate or staff deaths for jails that did not respond to the survey or for jails that were not selected to participate in the ASJ.

Inmate deaths

Among the 841 jail reporting units that provided BJS with data on inmate deaths, 22 reported a total of 43 inmates under their supervision from March to June 2020 who died from COVID-19. Thirty-three of those deaths were reported as confirmed deaths from COVID-19 or deaths where COVID-19 was a significant contributor as determined by a positive test before or after death. The other 10 deaths were reported as suspected deaths from COVID-19 or deaths where COVID-19 was a significant contributor based on the person having symptoms of COVID-19 before death but no positive test to confirm COVID-19. Among all 43 inmate deaths, about 70% (30) were reported as COVID-19 deaths based on a medical examiner's or coroner's evaluation.

The 43 confirmed or suspected COVID-19 deaths of inmates were isolated to 22 jail reporting units. About 67% of all reported inmate deaths were from eight jail reporting units that each reported multiple deaths from COVID-19, either confirmed or suspected (not shown in tables). One jail reporting unit reported that seven inmates died from COVID-19 while under its supervision from March to June 2020. Two others each reported six inmate deaths, and five reported two deaths each. Fourteen jail reporting units each reported a single inmate death from COVID-19, either confirmed or suspected.

Staff deaths

A total of 40 staff employed in local jails died from COVID-19 from March to June 2020, among the 841 jail reporting units that provided BJS with data on staff deaths. Thirty-two of those deaths were reported as

TABLE 7

COVID-19 deaths among local jail inmates and staff, March 1-June 30, 2020

	Inmates	Staff ^a
COVID-19 deaths in responding jails^b		
Total deaths	43	40
Confirmed ^c	33	32
Suspected ^d	10	8
Deaths based on medical examiner's or coroner's evaluation	30	27
Inmate and staff population at midyear 2020 in jails that reported on COVID-19 deaths		
Number of inmates and staff	376,500	160,500
As percentage of inmate population and staff employed in all jails	68.6%	67.8%

^aIncludes deputies, monitors, and other custody staff who spend more than 50% of their time with the incarcerated population, and administrators, clerical and maintenance staff, educational staff, professional and technical staff, and other unspecified staff who spend more than 50% of their time in the facility.

^bUnweighted and unadjusted for item non-response. The number of deaths are based on 841 jail reporting units that reported data on inmate and staff deaths from March 1 to June 30, 2020, out of a total of 943 jail reporting units that were selected for the 2020 Annual Survey of Jails.

^cCOVID-19 was a significant contributor as determined by a positive test for COVID-19 before or after death.

^dCOVID-19 was a significant contributor based on the person having symptoms of COVID-19 before death but no positive test to confirm COVID-19.

Source: Bureau of Justice Statistics, Annual Survey of Jails, 2020.

confirmed deaths from COVID-19 or deaths where COVID-19 was a significant contributor as determined by a positive test before or after death. The other eight deaths were reported as suspected deaths from COVID-19 or deaths where COVID-19 was a significant contributor based on the person having symptoms of COVID-19 before death but no positive test to confirm COVID-19. Among all 40 staff deaths, about 68% (27) were reported as COVID-19 deaths based on a medical examiner's or coroner's evaluation.

The 40 confirmed or suspected staff deaths from COVID-19 were isolated to staff employed in 30 jail reporting units (not shown in tables). About 35% (14) of all reported staff deaths were from four jail reporting units that each reported multiple staff deaths from COVID-19, either confirmed or suspected. One jail reporting unit reported that five employees died from COVID-19 from March to June 2020. Twenty-six jail reporting units each reported one staff death from COVID-19, either confirmed or suspected.

⁷Most jail jurisdictions consist of a single facility, but some have multiple facilities, or multiple facility operators, called reporting units.

Jails in counties with higher confirmed COVID-19 infection rates reported the largest declines in their inmate population since midyear 2019

Jails located in counties with the highest (1% or more) confirmed residential COVID-19 infection rates experienced the largest percentage decline in their inmate population (down 30%, or 49,400 inmates) from midyear 2019 to midyear 2020 (table 8). In comparison, jails located in counties with the lowest (less than 0.2%) confirmed residential infection rates experienced a smaller decline in their inmate population (down 19%, or 19,500 inmates) since midyear 2019.

From midyear 2019 to midyear 2020, the inmate population in jails located in the Northeast and West declined the most, by over 32%, followed by jails in the Midwest (down 25%) and jails in the South (down 21%). Jail jurisdictions holding 250 to 2,499 inmates reported the largest decline (down 27%) in their inmate population since midyear 2019. Jail jurisdictions holding 2,500 or more inmates reported the smallest decline (down 21%).

Although the jail confinement population declined across all jail categories since midyear 2019, jail authorities reported an increase in the number of persons who were not confined in jail but were under their supervision in programs outside of jail (up 11,400 persons, or 29%) (appendix table 12). The percentage of jail jurisdictions supervising persons outside of their jail also increased, from nearly 15% of all jails at midyear 2019 to about 19% at midyear 2020. A number of jail authorities reported that unconfined populations were higher in their jail jurisdiction due to COVID-19-related efforts to reduce the confined population by increasing the population under unconfined supervision.

TABLE 8
Number of inmates confined in local jails, by size of jail jurisdiction, region, and county COVID-19 infection rate, midyear 2019 and midyear 2020

	Inmates in custody ^a		Change	
	2019*	2020 †	Number	Percent
Total	734,500	549,100 †	-185,400	-25.2%
Jail jurisdiction size (ADP)^b				
Less than 50 inmates	19,300	14,800 †	-4,500	-23.3%
50-99	35,500	27,300 †	-8,200	-23.1
100-249	100,100	75,900 †	-24,200	-24.2
250-499	118,700	87,200 †	-31,500	-26.6
500-999	150,400	109,800 †	-40,600	-27.0
1,000-2,499	178,400	130,000 †	-48,400	-27.1
2,500 or more	132,200	104,200 †	-28,000	-21.2
Region				
Midwest	125,300	94,600 †	-30,700	-24.5%
South	386,800	304,200 †	-82,600	-21.4
West	148,800	101,100 †	-47,700	-32.1
Northeast	73,600	49,300 †	-24,300	-33.0
County residents' confirmed infection rate through June 30, 2020^c				
Less than 0.2%	101,900	82,400 †	-19,500	-19.1%
0.2%-0.39%	154,600	113,700 †	-40,800	-26.4
0.4%-0.59%	131,300	107,100 †	-24,200	-18.4
0.6%-0.99%	183,100	131,700 †	-51,400	-28.1
1% or more	163,500	114,100 †	-49,500	-30.2

Note: See appendix table 6 for standard errors.

*Comparison year.

†Difference with comparison year is significant at the 95% confidence level.

^aNumber of inmates confined on the last weekday in June.

^bBased on the average daily population (ADP) from July 2018 to June 2019 to compare change in size category since 2019.

^cCounty-level cumulative confirmed COVID-19 cases as a percentage of the county population through June 30, 2020.

Source: Bureau of Justice Statistics, Census of Jails, 2019; Annual Survey of Jails, 2020; and USAFacts.org.

4 in 10 jail beds were unoccupied at midyear 2020

While the jail population declined about 25% since midyear 2019, the rated capacity remained relatively stable (table 9). As a result, the jail occupancy rate declined from 81% at midyear 2019 to 60% at midyear 2020. The percentage of jails operating above their rated capacity declined from 15% of all jails at midyear 2019 to 7% at midyear 2020.

Jails located in counties with the highest (1% or more) confirmed residential COVID-19 infection rates were the least occupied (54% of rated capacity) at midyear 2020, down from about 73% at midyear

2019. In comparison, jails located in counties with the lowest (less than 0.2%) confirmed residential COVID-19 infection rates were the most occupied (66% of rated capacity) at midyear 2020, down from about 86% at midyear 2019. Bed space in jails located in the Northeast was the least occupied (47% of rated capacity) at midyear 2020, followed by jails in the West (55%), Midwest (57%), and South (66%).

Combined, about 6 in 10 beds were occupied in jail jurisdictions holding 100 or more inmates. In comparison, about 4 in 10 beds in the smallest jails (holding less than 50 inmates) were occupied at midyear 2020.

TABLE 9

Jail capacity, by size of jail jurisdiction, region, and county COVID-19 infection rate, midyear 2019 and midyear 2020

	Rated capacity ^a		Percent of capacity occupied at midyear ^b			Percent of jail jurisdictions operating at more than 100% of rated capacity at midyear		
	2019*	2020	2019*	2020	Percentage point change ^c	2019*	2020	Percentage point change
Total	907,700	913,700	80.9%	60.1% †	-20.8%	15.0%	7.0% †	-7.9%
Jail jurisdiction size (ADP)^d								
Less than 50 inmates	33,700	36,800	57.2%	40.2% †	-17.0%	5.4%	3.7%	-1.7%
50-99	49,200	49,800	72.0	54.7 †	-17.3	12.9	8.7	-4.2
100-249	122,100	122,700	82.0	61.8 †	-20.2	22.6	9.0 †	-13.6
250-499	138,400	136,300	85.8	63.9 †	-21.8	24.4	10.6 †	-13.8
500-999	180,100	182,300	83.5	60.2 †	-23.3	25.2	9.8 †	-15.4
1,000-2,499	219,800	215,800	81.2	60.3 †	-20.9	16.5	3.4 †	-13.1
2,500 or more	164,400	169,900	80.4	61.3 †	-19.1	19.3	0.0	-19.3
Region								
Midwest	156,800	165,700	79.9%	57.1% †	-22.8%	12.9%	7.2% †	-5.7%
South	460,400	461,200	84.0	66.0 †	-18.1	19.6	8.2 †	-11.4
West	180,500	182,400	82.4	55.4 †	-27.0	9.0	3.0 †	-6.0
Northeast	110,100	104,500	66.9	47.1 †	-19.7	5.1	5.8	0.7
County residents' confirmed infection rate through June 30, 2020^e								
Less than 0.2%	118,000	124,900	86.4%	66.0% †	-20.4%	14.0%	9.3% †	-4.8%
0.2%-0.39%	182,200	182,800	84.9	62.2 †	-22.6	17.9	9.1 †	-8.8
0.4%-0.59%	157,200	177,100 †	83.5	60.5 †	-23.0	15.9	2.4 †	-13.5
0.6%-0.99%	226,800	217,600	80.7	60.5 †	-20.2	16.3	3.3 †	-13.0
1% or more	223,400	211,200	73.2	54.0 †	-19.2	10.0	7.0	-2.9

Note: See appendix table 7 for standard errors.

*Comparison year.

†Difference with comparison year is significant at the 95% confidence level.

^aMaximum number of beds or inmates assigned by a rating official to a facility, excluding separate temporary holding-areas.

^bThe midyear population in table 8, divided by the rated capacity.

^cThe numerical difference between two percentages.

^dBased on the average daily population (ADP) from July 2018 to June 2019, to compare change in size category since 2019.

^eCounty-level cumulative confirmed COVID-19 cases as a percentage of the county population through June 30, 2020.

Source: Bureau of Justice Statistics, Census of Jails, 2019; Annual Survey of Jails, 2020; and USAFacts.org.

From midyear 2019 to midyear 2020, the number of inmates held for a misdemeanor dropped by 45%

The overall decline in the jail inmate population from midyear 2019 to midyear 2020—attributable to pandemic-related reductions in admissions to jails and expedited releases—is reflected in declines seen in populations with specific characteristics. The greatest change was in the composition of the female inmate population and the population of the most serious type of offense. After steady increases during the past decade, the female portion of the total jail inmate population declined from a high of nearly 16% at midyear 2018 (not shown in tables) to about 13% at midyear 2020, the lowest level since 2011 (table 10). The female population saw a greater decline (down 37%) than the male population (23%) from midyear 2019 to midyear 2020.

The number of inmates held for a misdemeanor declined nearly 45% since midyear 2019, outpacing the decline in the number of inmates held for a felony (down 18%). As a result, the percentage of inmates held for a misdemeanor declined from about 23% at midyear 2019 to about 17% at midyear 2020, and the percentage of inmates held for a felony increased from 70% to nearly 77% during the same period.

The distribution of inmates by conviction status also changed. The decline in the convicted population (down 34%) outpaced the decline in the unconvicted population (down 21%). As a result, the percentage of unconvicted inmates increased from about 65% at midyear 2019 to about 69% at midyear 2020. The percentage of convicted inmates decreased from about 35% to nearly 31% during the same period.

TABLE 10
Number and percent of confined inmates in local jails, by characteristics, midyear 2019 and midyear 2020

Characteristic	2019*		2020		Change	
	Number	Percent	Number	Percent	Number	Percent
Total	734,500	100%	549,100 †	100%	-185,400	-25.2%
Sex						
Male	623,700	84.9%	479,300 †	87.3% †	-144,400	-23.2%
Female	110,700	15.1	69,800 †	12.7 †	-41,000	-37.0
Race/ethnicity						
White ^a	362,900	49.4%	262,100 †	47.7% †	-100,800	-27.8%
Black ^a	247,100	33.6	192,600 †	35.1 †	-54,400	-22.0
Hispanic	106,900	14.6	81,900 †	14.9	-25,000	-23.4
American Indian/Alaska Native ^a	10,200	1.4	6,700 †	1.2	-3,600	-34.9
Asian ^a	4,700	0.6	3,700 †	0.7 †	-1,000	-21.1
Native Hawaiian/Pacific Islander ^a	800	0.1	600 †	0.1	-100	-16.4
Two or more races ^a	1,900	0.3	1,500 †	0.3	-400	-20.7
Conviction status						
Convicted	253,700	34.5%	168,400 †	30.7% †	-85,300	-33.6%
Unconvicted	480,700	65.5	380,700 †	69.3 †	-100,000	-20.8
Most serious type of offense						
Felony	513,900	70.0%	421,200 †	76.7% †	-92,600	-18.0%
Misdemeanor	170,300	23.2	94,000 †	17.1 †	-76,300	-44.8
Other ^b	50,300	6.8	33,800 †	6.2 †	-16,400	-32.7

Note: Data are based on the number of inmates confined on the last weekday in June. Data were adjusted for non-response and rounded to the nearest 100. Details may not sum to totals due to rounding. See appendix table 8 for standard errors.

*Comparison year.

†Difference with comparison year is significant at the 95% confidence level.

^aExcludes persons of Hispanic origin (e.g., “white” refers to non-Hispanic whites and “black” refers to non-Hispanic blacks).

^bIncludes civil infractions and unknown offenses.

Source: Bureau of Justice Statistics, Census of Jails, 2019; and Annual Survey of Jails, 2020.

The jail incarceration rate at midyear 2020 was the lowest since 1990

Due to the decline in the jail inmate population since midyear 2019 (attributable to pandemic-related reductions in admissions to jails and expedited releases) and the increase in the U.S. residential population, the nationwide rate of incarceration in local jails was at a historic low at midyear 2020. Compared to a peak rate of 259 inmates per 100,000 U.S. residents in 2007 (not shown in tables), about 167 inmates per 100,000 U.S. residents were incarcerated in local jails nationwide at midyear 2020, down from 224 inmates per 100,000 in 2019 (table 11). This was the lowest jail incarceration rate since 1990, when 163 inmates per 100,000 U.S. residents were incarcerated in local jails nationwide (not shown in tables).

Males were jailed at a rate of 295 per 100,000 male U.S. residents in 2020. Females were jailed at a rate of 42 per 100,000 female U.S. residents in 2020.

Blacks were jailed at a rate of 465 per 100,000 black U.S. residents at midyear 2020. American Indians and Alaska Natives (AIANs) had a jail incarceration

rate of 274 per 100,000 AIAN U.S. residents. Whites (133 per 100,000 white U.S. residents) and Hispanics (134 per 100,000 Hispanic U.S. residents) were jailed at similar rates. Native Hawaiian and Other Pacific Islander (NHOPI) had a jail incarceration rate of 104 per 100,000 NHOPI U.S. residents. Asians (19 per 100,000 Asian U.S. residents) and persons identified as two or more races (19 per 100,000 two or more race U.S. residents) were jailed at similar rates.

Since midyear 2019, the overall jail incarceration rate decreased about 26%. The male incarceration rate fell about 23% from midyear 2019 to midyear 2020, declining from 386 to 295 inmates per 100,000 male U.S. residents. The female incarceration rate fell about 37% since 2019, declining from 66 to 42 inmates per 100,000 female U.S. residents. The jail incarceration rate fell 35% for AIANs (from 420 to 274 per 100,000); 28% for whites (from 184 to 133 per 100,000); 24% for Hispanics (from 176 to 134 per 100,000) and persons identified as two or more races (from 25 to 19 per 100,000); 23% for blacks (from 600 to 465 per 100,000) and Asians (from 25 to 19 per 100,000); and 19% for NHOPIs (from 129 to 104 per 100,000).

TABLE 11
Local jail incarceration rates, by sex and race or ethnicity, midyear 2019 and midyear 2020

Characteristic	Number per 100,000 U.S. residents		Change	
	2019 ^{a*}	2020 ^b	Number per 100,000 U.S. residents	Percent
Total	224	167 †	-57	-25.5%
Sex				
Male	386	295 †	-90	-23.4%
Female	66	42 †	-25	-37.2
Race/ethnicity				
White ^c	184	133 †	-51	-27.6%
Black ^c	600	465 †	-135	-22.6
Hispanic	176	134 †	-43	-24.3
American Indian/Alaska Native ^c	420	274 †	-146	-34.8
Asian ^c	25	19 †	-6	-22.9
Native Hawaiian/Pacific Islander ^c	129	104 †	-24	-18.7
Two or more races ^c	25	19 †	-6	-23.7

Note: Rates are based on the number of confined inmates at midyear in local jails per 100,000 U.S. residents (for total) or per 100,000 U.S. residents of a given demographic group. Data are based on the inmate population confined on the last weekday in June and include both adults and juveniles, unless otherwise specified. See appendix table 9 for standard errors.

*Comparison year.

†Difference with comparison year is significant at the 95% confidence level.

^aThe population of U.S. residents in 2019 is based on the U.S. Census Bureau's population estimation for July 1, 2019.

^bThe population of U.S. residents in 2020 is based on the U.S. Census Bureau's population estimation for July 1, 2020.

^cExcludes persons of Hispanic origin (e.g., "white" refers to non-Hispanic whites and "black" refers to non-Hispanic blacks).

Source: Bureau of Justice Statistics, Census of Jails, 2019; and Annual Survey of Jails, 2020.

Methodology

Findings in this report are based on the 2019 Census of Jails (COJ) and the 2020 Annual Survey of Jails (ASJ). The Bureau of Justice Statistics (BJS) uses the COJ to periodically conduct a complete enumeration of local jail facilities and Federal Bureau of Prisons (BOP) detention facilities to collect data on inmate population and jail programs. The 2019 COJ was the eleventh collection in this series since 1970. In the years between complete enumerations of jails, BJS conducts the ASJ, a survey administered to a sample of approximately one-third of the nation's jails, to provide national estimates of the size and characteristics of the jail inmate population. The COJ and ASJ collections are currently conducted through web-based surveys.

Numerous jurisdictions nationwide released inmates from jails in an effort to lessen the spread of COVID-19. BJS added a special addendum to the 2020 and 2021 ASJ to gather data on these pandemic-related releases. See “2020 Annual Survey of Jails Special Addendum on Coronavirus (COVID-19),” page 2, for details. In June 2020, BJS met with the Office of Management and Budget (OMB) to finalize the addendum questionnaire and received OMB approval on June 19, 2020.

The universe of the Census of Jails and the Annual Survey of Jails

The COJ and ASJ gather data from jails that hold inmates beyond arraignment, usually for a period exceeding 72 hours. Jail facilities are intended to hold adults, but some also hold juveniles (persons age 17 or younger). The universe of the COJ consists of all local jail jurisdictions (including county, city, regional, and privately operated jail facilities) and BOP detention facilities that function as jails.⁸ The universe of the ASJ includes all local jail jurisdictions but excludes BOP detention facilities. In this report, BOP data are excluded.

The universe of the COJ and ASJ excludes separate temporary holding facilities (such as drunk tanks and police lockups) that do not hold persons after they have been formally charged in court, unless the temporary holding facilities are operated as part of a local jail. Also excluded are combined jail and prison systems in Alaska, Connecticut, Delaware, Hawaii, Rhode Island, and Vermont. These combined systems are operated by state departments of corrections and included in BJS's National Prisoner Statistics program. However, there are 15 independently operated jails in Alaska that are included in the universe of the COJ and ASJ.

⁸Regional jail jurisdictions are created by two or more local governing bodies through cooperative agreements.

Sample Design for 2020 Annual Survey of Jails

Stratum	Number of jurisdictions in census	Number of sampled jurisdictions	Active sampled jurisdictions	Active sampled reporting units	Design weight
1 Large jails ^a (certainty stratum) Jails holding at least one juvenile on June 28, 2019 and a confined population of	258	258	258	292	1.000
2 264-499	73	29	29	29	2.517
3 141-263	69	17	17	17	4.059
4 69-140	60	10	10	10	6.000
5 0-68 Jails holding adults only on June 28, 2019 and a confined population of	48	4	4	4	12.000
6 227-749	359	275	275	287	1.305
7 103-226	452	100	99	99	4.520
8 40-102	580	65	64	64	8.923
9 0-39	883	73	73	73	12.096
10 Regional jails ^b (certainty stratum)	68	68	68	69	1.000
Total	2,850	899	897	943	

^aLarge jails are those that held at least one juvenile inmate and 500 or more inmates, or 750 or more adult inmates on June 28, 2019.

^bRegional jail jurisdictions are created by two or more local governing bodies through cooperative agreements.

Jail jurisdictions and reporting units

A jail jurisdiction is a legal entity that has responsibility for managing jail facilities. Jail jurisdictions typically operate at the county level, with a sheriff's office or jail administrator managing the local facilities. Most jail jurisdictions consist of a single facility, but some have multiple facilities, or multiple facility operators, called reporting units. For example, three reporting units in Allegheny County, Pennsylvania, represent a single jail jurisdiction.

Sampling design of the Annual Survey of Jails

The ASJ uses a stratified probability sampling design based on jail population data collected through the most recent COJ. Jails in the ASJ sample are surveyed annually until the next sample is drawn. The ASJ sample is drawn at the jail jurisdiction level. When a jail jurisdiction with multiple jail operators or facilities is sampled, data are collected from all reporting units within that jail jurisdiction.

The most recent sample refresh occurred in the 2020 ASJ, where a sample of 899 jail jurisdictions was selected to represent the approximately 2,850 jail jurisdictions nationwide. In selecting jails, all jurisdictions were grouped into 10 strata based on their inmate population and the presence of juveniles at midyear 2019. In 8 of the 10 strata, a random sample of jail jurisdictions was selected. The remaining two strata were certainty strata, where all jail jurisdictions were selected. One certainty stratum consisted of all jails that were operated jointly by two or more jurisdictions. The other certainty stratum consisted of large jail jurisdictions that—

- held at least one juvenile inmate and a total of 500 or more inmates on June 28, 2019 or
- held 750 or more adult inmates on June 28, 2019.

Response rate and non-response adjustment

The 2019 Census of Jails

Because the 2019 COJ represents a complete enumeration of local jails in the U.S., the results are not subject to sampling error. However, the results were affected by unit and item non-response, and adjustments were made to account for such non-response. The 2019 COJ had a response rate of 94%; 183 jail jurisdictions did not respond to the

census. To reduce non-response bias, non-response weighting was implemented. To calculate the non-response weight, missing data were first imputed for two variables (confined inmate population and number of juveniles) using a last observation carried forward (LOCF) procedure. The missing data were replaced with the most recent prior-year data that the same jail jurisdictions reported to BJS's 2016, 2017, or 2018 ASJ or Mortality in Correctional Institutions (MCI) jail collection. For cases with no prior-year data, a weighted sequential hot-deck (WSHD) procedure was implemented to impute missing data, where the donor for each missing item was randomly selected from a set of similar jails, sorted by related auxiliary population values (e.g., jail size, inmate sex distribution, state or region, and county classification). Next, all jail jurisdictions were classified into 10 strata based on their reported or imputed values of confined population, the presence of juveniles, and whether the jail jurisdictions were operated as regional jails per the 2019 COJ. The non-response weight was calculated as the total confined population of all active jail jurisdictions in each state and stratum, divided by the sum of the confined population of all jail jurisdictions in each state and stratum that responded to the 2019 COJ:

$$W_{sh} = \frac{\sum_{i=1}^{n_{sh}} p_{shi} \times A_{shi}}{\sum_{i=1}^{n_{sh}} p_{shi} \times R_{shi}}$$

where—

n_{sh} = number of jail jurisdictions in state s and stratum h ,

p_{shi} = confined population for jail jurisdiction i in state s and stratum h ,

A_{shi} = active status indicator for jurisdiction i in state s and stratum h (1 = active, 0 = out of scope), and

R_{shi} = response indicator of jurisdiction i in state s and stratum h (1 = respondent, 0 = non-respondent).

The 2020 Annual Survey of Jails

The 2020 ASJ sample consisted of 897 active jail jurisdictions, represented by 943 reporting units. Two of the sampled jail jurisdictions were out-of-scope due to closure. The survey achieved a response rate of 94%. Non-response weighting was implemented to account

for unit non-response. Jurisdictions were grouped into weighting classes based on sampling stratum and inmate population at midyear 2019. The non-response weighting adjustment factor was calculated for jails in each weighting class h as—

$$w_h = \frac{\sum_{i=1}^{n_h} p_{hi} \times A_{hi}}{\sum_{i=1}^{n_h} p_{hi} \times R_{hi}}$$

where—

n_h = number of jurisdictions sampled in weighting class h ,

p_{hi} = sampling weight for jurisdiction i in weighting class h ,

A_{hi} = active status indicator for jurisdiction i in weighting class h (1 = active, 0 = out-of-scope), and

R_{hi} = response indicator of jurisdiction i in weighting class h (1 = respondent, 0 = non-respondent).

Item non-response imputation

The 2019 Census of Jails

Item response rates ranged from 90% to 100% in the 2019 COJ. Key population items (including one-day counts of the confined population, population by sex and juvenile status, population by race or ethnicity, admissions by sex, average daily population (ADP) by sex, and rated capacity) had item response rates of more than 95%. For responding jail jurisdictions that were unable to provide some requested items, a LOCF procedure was used to replace missing values with prior-year (2016, 2017, or 2018) ASJ or MCI data from the same jails, adjusted for year-to-year difference in the jail's confined population.

For cases with no prior-year data, a WSHD procedure was implemented to impute missing data, where the donor for each missing item was randomly selected from a set of similar jails, sorted by related auxiliary population values. Donor pools, also referred to as imputation classes, are formed by state, ADP category, and regional jail indicator. Within each imputation class, jails are sorted by confined jail population at midyear 2019.

The 2020 Annual Survey of Jails

Item response rates ranged from 95% to 100% for the 2020 ASJ. For responding jail jurisdictions that were unable to provide some requested items, missing

data were imputed using LOCF or WSHD. In LOCF, missing values were substituted by last-observed values (i.e., data that the same jail jurisdictions submitted to the 2019 COJ). Specifically, missing values in rated capacity and inmate population supervised outside of jail were replaced with 2019 values without any adjustment, while missing values in inmate population counts, admissions, and ADP were replaced with 2019 values after adjustment for average year-to-year change. The average year-to-year adjustment factor was calculated, for each sampling stratum, as the ratio of the weighted sum of data reported in 2020 to that in 2019. Only data from jails that provided data in both years were included in the calculation. By applying the average year-to-year adjustment factor, BJS assumed that jails with missing items experienced the average year-to-year percentage change as other jails in the same sampling stratum.

In the scenario where no prior-year data were available, a WSHD procedure was used to impute missing values. This applies to missing values in variables that were not collected in 2019 (for example, the COVID-19 variables) and missing values for jails that did not respond, or provide valid data, to the 2019 COJ. In the WSHD procedure, the donor for each missing item was randomly selected from a group of similar jails (called the imputation class), sorted by related auxiliary population values. The imputation class and sorting variables differed by the variable being imputed. For variables in the COVID-19 module, including expedited releases, COVID-19 tests, and positive tests, and the number of staff tested positive, the imputation class was formed by the sampling stratum and the number of confirmed COVID-19 cases in the county (0-99, 100-1,399, 400-1,499, and 1,500 or more). Within each imputation class, jails were sorted by confined inmate population at midyear 2020 (for imputing expedited releases and COVID-19 tests), total number of staff (for imputing the number of staff tested positive), or the number of positive tests (for imputing the number of inmates tested positive). Missing values in COVID-19-related death counts were not imputed.

Missing COVID-19 variables for New York City Department of Corrections (including expedited release count, number of COVID tests conducted, number of positive tests, and number of inmates tested positive) were imputed using a series of regression models instead of the WSHD procedure described above. This is because no suitable single donor could be found for New York City due to its unique

experience during the first wave of the COVID-19 pandemic, coupled with a rapidly declining inmate population. The models used Poisson regressions to predict counts (e.g., releases or tests) based on annual admissions and releases, inmate population at the end of February, 2020, and at midyear 2020, occupancy rate at the end of February, 2020, staff positive rate and county COVID-19 positive rate category as of midyear 2020, jail size category (measured by ADP), and region. Missing values for New York City were then imputed using the regression results.

Estimating admissions from March 2020 to June 2020

Admissions from March 1, 2020 to June 30, 2020 were estimated in two steps. In step 1, monthly ADP was estimated for the 12 months from July 2019 to June 2020 as the average number of inmates held on the last weekday of the month and prior month. For example, the March ADP was estimated as the average number of inmates held on the last weekdays of February and March. The COVID-19 addendum to the 2020 ASJ collected inmate counts held on

the last weekday of each month from January 2020 to June 2020. For the months when inmate counts were unavailable (i.e., July through December 2019), end-of-month inmate counts were interpolated from inmate counts on the last weekday of June 2019 and January 2020. In step 2, admissions from March 2020 to June 2020 were estimated as the reported annual admissions from July 2019 to June 2020, divided by the sum of estimated monthly ADP for the year, and then multiplied by the sum of estimated monthly ADP from March 2020 to June 2020.

County residents' confirmed infection rate

The infection rate was calculated as the cumulative number of confirmed COVID-19 cases in the county, through June 30, 2020, as a percentage of the county population. Data were downloaded from <https://usafacts.org/visualizations/coronavirus-covid-19-spread-map/>. For a detailed methodology of how USAFacts collects county COVID-19 data, see <https://usafacts.org/articles/detailed-methodology-covid-19-data/>.

APPENDIX TABLE 1

Standard errors for figure 1 and table 1: Number of inmates confined in local jails on the last weekday in June 2019 and the last weekday of each month from January to June 2020

Last weekday in—	Number
June 2019	~
January 2020	6,242
February 2020	6,227
March 2020	5,467
April 2020	4,863
May 2020	5,076
June 2020	5,116

~Not applicable. Data represent a complete enumeration based on the 2019 Census of Jails.

Source: Bureau of Justice Statistics, Census of Jails, 2019; and Annual Survey of Jails, 2020.

APPENDIX TABLE 3

Standard errors for table 3: Admissions and expedited releases, by size of jail jurisdiction, region, and county COVID-19 infection rate, March 1-June 30, 2020

	Number of admissions	Expedited releases	
		Number	As percentage of admissions
Total	29,843	13,550	0.57%
Jail jurisdiction size (ADP)			
Less than 50 inmates	17,165	6,799	3.53%
50-99	19,634	9,495	5.08
100-249	21,649	6,484	1.51
250-499	13,538	2,209	0.55
500-999	10,498	1,949	0.39
1,000-2,499	8,388	2,321	0.51
2,500 or more	14,771	1,541	0.48
Region			
Midwest	28,802	11,021	1.86%
South	31,385	8,441	0.70
West	22,506	2,276	0.41
Northeast	8,470	1,525	1.26
County residents' confirmed infection rate by June 30, 2020			
Less than 0.2%	27,272	11,602	2.57%
0.2%-0.39%	22,656	3,592	0.63
0.4%-0.59%	25,336	5,014	0.91
0.6%-0.99%	20,986	4,400	0.73
1% or more	18,707	3,508	0.95

Source: Bureau of Justice Statistics, Annual Survey of Jails, 2020; and USAFacts.org.

APPENDIX TABLE 2

Standard errors for table 2: Local jail population as a percentage of the June 2019 jail population, by region, January-June 2020

	June 2019	January 2020	February 2020	March 2020	April 2020	May 2020	June 2020
U.S. total	~	0.85%	0.85%	0.74%	0.66%	0.69%	0.70%
Midwest	~	4.53	4.48	3.36	2.87	3.06	3.34
South	~	1.88	1.86	1.58	1.44	1.53	1.56
West	~	4.18	4.18	3.42	2.94	3.02	3.03
Northeast	~	5.02	5.04	4.21	3.63	3.68	3.75

~Not applicable. Data represent a complete enumeration based on the 2019 Census of Jails.

Source: Bureau of Justice Statistics, Census of Jails, 2019; and Annual Survey of Jails, 2020.

APPENDIX TABLE 4

Standard errors for table 4: COVID-19 testing and positive cases among local jail inmates, by size of jail jurisdiction, region, and county infection rate, March 1-June 30, 2020

	Admissions	Total tests conducted	Number of positive tests	Number of persons who tested positive	Percent of admissions that were tested	Percent of tests that were positive
Total	29,843	6,262	986	960	0.26%	0.27%
Jail jurisdiction size (ADP)						
Less than 50 inmates	17,165	1,249	148	148	0.64%	3.22%
50-99	19,634	1,925	104	104	0.99	1.10
100-249	21,649	2,640	452	452	0.59	1.95
250-499	13,538	2,122	316	275	0.53	0.87
500-999	10,498	1,287	178	163	0.30	0.31
1,000-2,499	8,388	2,544	327	288	0.55	0.28
2,500 or more	14,771	4,362	751	746	0.94	0.49
Region						
Midwest	28,802	2,580	245	239	0.46%	0.44%
South	31,385	3,733	627	617	0.30	0.43
West	22,506	4,646	740	708	0.81	0.54
Northeast	8,470	1,766	238	238	1.52	0.59
County residents' confirmed infection rate through June 30, 2020						
Less than 0.2%	27,272	2,176	75	74	0.48%	0.34%
0.2%-0.39%	22,656	2,938	416	411	0.52	0.55
0.4%-0.59%	25,336	1,775	270	241	0.35	0.55
0.6%-0.99%	20,986	2,537	393	370	0.44	0.57
1% or more	18,707	4,796	810	794	1.16	0.44

Source: Bureau of Justice Statistics, Annual Survey of Jails, 2020; and USAFacts.org.

APPENDIX TABLE 5

Standard errors for table 6: COVID-19 positive tests among local jail staff, by size of jail jurisdiction, region, and county infection rate, March 1-June 30, 2020

	Number of staff at midyear 2020	Staff positive tests	
		Number	Percent
Total	3,679	495	0.17%
Jail jurisdiction size (ADP)			
Less than 50 inmates	1,105	143	0.90%
50-99	1,314	151	1.08
100-249	1,756	194	0.58
250-499	1,149	83	0.26
500-999	1,076	167	0.36
1,000-2,499	892	71	0.13
2,500 or more	3,178	369	0.34
Region			
Midwest	1,981	163	0.36%
South	2,477	218	0.17
West	1,901	207	0.44
Northeast	3,284	380	0.55
County residents' confirmed infection rate through June 30, 2020			
Less than 0.2%	1,876	161	0.49%
0.2%-0.39%	1,615	87	0.21
0.4%-0.59%	2,056	197	0.44
0.6%-0.99%	2,104	143	0.19
1% or more	3,244	411	0.34

Source: Bureau of Justice Statistics, Annual Survey of Jails, 2020; and USAFacts.org.

APPENDIX TABLE 6

Standard errors for table 8: Number of inmates confined in local jails, by size of jail jurisdiction, region, and county COVID-19 infection rate, midyear 2019 and midyear 2020

	Inmates in custody		Change	
	2019	2020	Number	Percent
Total	~	5,116	5,116	0.70%
Jail jurisdiction size (ADP)				
Less than 50 inmates	~	1,434	1,434	7.43%
50-99	~	2,274	2,274	6.42
100-249	~	2,806	2,806	2.80
250-499	~	2,572	2,572	2.17
500-999	~	2,810	2,810	1.87
1,000-2,499	~	1,674	1,674	0.94
2,500 or more	~	4,765	4,765	3.61
Region				
Midwest	~	4,192	4,192	3.34%
South	~	6,044	6,044	1.56
West	~	4,505	4,505	3.03
Northeast	~	2,761	2,761	3.75
County residents' confirmed infection rate through June 30, 2020				
Less than 0.2%	~	4,192	4,192	4.11%
0.2%-0.39%	~	4,095	4,095	2.65
0.4%-0.59%	~	4,117	4,117	3.14
0.6%-0.99%	~	4,249	4,249	2.32
1% or more	~	4,958	4,958	3.03

~Not applicable. Data represent a complete enumeration based on the 2019 Census of Jails.

Source: Bureau of Justice Statistics, Census of Jails, 2019; Annual Survey of Jails, 2020; and USAFacts.org.

APPENDIX TABLE 7

Standard errors for table 9: Jail capacity, by size of jail jurisdiction, region, and county COVID-19 infection rate, midyear 2019 and midyear 2020

	Rated capacity		Percent of capacity occupied at midyear			Percent of jail jurisdictions operating at more than 100% of rated capacity at midyear		
	2019	2020	2019	2020	Percentage point change	2019	2020	Percentage point change
Total	~	9,206	~	0.43%	0.43%	~	1.11%	1.11%
Jail jurisdiction size (ADP)								
Less than 50 inmates	~	3,287	~	3.11%	3.11%	~	1.96%	1.96%
50-99	~	4,287	~	2.98	2.98	~	3.62	3.62
100-249	~	4,874	~	1.91	1.91	~	2.37	2.37
250-499	~	4,135	~	1.04	1.04	~	1.67	1.67
500-999	~	5,202	~	0.68	0.68	~	0.76	0.76
1,000-2,499	~	2,864	~	0.40	0.40	~	0.27	0.27
2,500 or more	~	7,869	~	0.55	0.55	~		
Region								
Midwest	~	7,825	~	1.21%	1.21%	~	2.13%	2.13%
South	~	9,427	~	0.55	0.55	~	1.46	1.46
West	~	8,006	~	0.73	0.73	~	2.81	2.81
Northeast	~	6,394	~	1.07	1.07	~	4.66	4.66
County residents' confirmed infection rate through June 30, 2020								
Less than 0.2%	~	6,786	~	1.67%	1.67%	~	2.30%	2.30%
0.2%-0.39%	~	7,231	~	0.92	0.92	~	2.72	2.72
0.4%-0.59%	~	7,400	~	0.97	0.97	~	0.43	0.43
0.6%-0.99%	~	6,949	~	0.71	0.71	~	1.27	1.27
1% or more	~	9,037	~	0.82	0.82	~	2.87	2.87

~Not applicable. Data represent a complete enumeration based on the 2019 Census of Jails.

Source: Bureau of Justice Statistics, Census of Jails, 2019; Annual Survey of Jails, 2020; and USAFacts.org.

APPENDIX TABLE 8**Standard errors for table 10: Number and percent of confined inmates in local jails, by characteristics, midyear 2019 and midyear 2020**

Characteristic	2019		2020		Change	
	Number	Percent	Number	Percent	Number	Percent
Total	~	~	5,116	...	5,116	0.70%
Sex						
Male	~	~	4,545	0.14%	4,545	0.73%
Female	~	~	999	0.14	999	0.90
Race/ethnicity						
White	~	~	3,004	0.45%	3,004	0.83%
Black	~	~	2,895	0.39	2,895	1.17
Hispanic	~	~	2,362	0.36	2,362	2.21
American Indian/Alaska Native	~	~	701	0.13	701	6.86
Asian	~	~	116	0.02	116	2.45
Native Hawaiian/Pacific Islander	~	~	52	0.01	52	6.79
Two or more races	~	~	141	0.02	141	7.60
Conviction status						
Convicted	~	~	2,798	0.44%	2,798	1.10%
Unconvicted	~	~	4,394	0.44	4,394	0.91
Most serious type of offense						
Felony	~	~	5,019	0.41%	5,019	0.98%
Misdemeanor	~	~	1,751	0.32	1,751	1.03
Other	~	~	1,613	0.29	1,613	3.21

...Not applicable.

~Not applicable. Data represent a complete enumeration based on the 2019 Census of Jails.

Source: Bureau of Justice Statistics, Census of Jails, 2019; and Annual Survey of Jails, 2020.

APPENDIX TABLE 9**Standard errors for table 11: Local jail incarceration rates, by sex and race or ethnicity, midyear 2019 and midyear 2020**

Characteristic	Number per 100,000 U.S. residents		Change	
	2019	2020	Number per 100,000 U.S. residents	Percent
Total	~	1.6	1.6	0.69%
Sex				
Male	~	2.8	2.8	0.73%
Female	~	0.6	0.6	0.90
Race/ethnicity				
White	~	1.5	1.5	0.83%
Black	~	7.0	7.0	1.16
Hispanic	~	3.9	3.9	2.18
American Indian/Alaska Native	~	28.8	28.8	6.86
Asian	~	0.6	0.6	2.39
Native Hawaiian/Pacific Islander	~	8.5	8.5	6.60
Two or more races	~	1.9	1.9	7.31

~Not applicable. Data represent a complete enumeration based on the 2019 Census of Jails.

Source: Bureau of Justice Statistics, Census of Jails, 2019; and Annual Survey of Jails, 2020.

APPENDIX TABLE 10

Number of annual admissions to local jails, by size of jail jurisdiction, region, and county COVID-19 infection rate, 2019 and 2020

	Annual admissions ^a		Change	
	2019*	2020	Number	Percent
Total	10,323,000	8,652,000 †	-1,670,000	-16.2%
Jail jurisdiction size (ADP)^b				
Less than 50 inmates	713,000	553,000 †	-159,000	-22.3%
50-99	713,000	673,000	-41,000	-5.7
100-249	1,670,000	1,453,000 †	-217,000	-13.0
250-499	1,696,000	1,381,000 †	-316,000	-18.6
500-999	1,911,000	1,557,000 †	-354,000	-18.5
1,000-2,499	2,254,000	1,831,000 †	-423,000	-18.8
2,500 or more	1,366,000	1,205,000 †	-160,000	-11.7
Region				
Midwest	2,334,000	2,108,000 †	-226,000	-9.7%
South	5,008,000	4,160,000 †	-847,000	-16.9
West	2,376,000	1,934,000 †	-442,000	-18.6
Northeast	605,000	451,000 †	-154,000	-25.5
County residents' confirmed infection rate through June 30, 2020^c				
Less than 0.2%	1,654,000	1,580,000	-74,000	-4.5%
0.2%-0.39%	2,375,000	1,915,000 †	-460,000	-19.4
0.4%-0.59%	1,985,000	1,869,000	-117,000	-5.9
0.6%-0.99%	2,582,000	1,954,000 †	-629,000	-24.4
1% or more	1,726,000	1,335,000 †	-391,000	-22.7

Note: See appendix table 11 for standard errors.

*Comparison year.

†Difference with comparison year is significant at the 95% confidence level.

^aAdmissions for the 12-month period ending on June 30.

^bBased on the average daily population (ADP) from July 2018 to June 2019 to compare change in size category since 2019.

^cCounty-level cumulative confirmed COVID-19 cases as a percentage of the county population through June 30, 2020.

Source: Bureau of Justice Statistics, Census of Jails, 2019; Annual Survey of Jails, 2020; and USAFacts.org.

APPENDIX TABLE 11**Standard errors for appendix table 10: Number of annual admissions to local jails, by size of jail jurisdiction, region, and county COVID-19 infection rate, 2019 and 2020**

	Annual admissions		Change	
	2019	2020	Number	Percent
Total	~	105,516	105,516	1.02%
Jail jurisdiction size (ADP)				
Less than 50 inmates	~	54,186	54,186	7.60%
50-99	~	61,769	61,769	8.66
100-249	~	71,262	71,262	4.27
250-499	~	50,121	50,121	2.95
500-999	~	46,139	46,139	2.41
1,000-2,499	~	27,308	27,308	1.21
2,500 or more	~	51,383	51,383	3.76
Region				
Midwest	~	108,299	108,299	4.64%
South	~	109,833	109,833	2.19
West	~	83,220	83,220	3.50
Northeast	~	31,516	31,516	5.21
County residents' confirmed infection rate through June 30, 2020				
Less than 0.2%	~	99,270	99,270	6.00%
0.2%-0.39%	~	83,394	83,394	3.51
0.4%-0.59%	~	92,933	92,933	4.68
0.6%-0.99%	~	74,776	74,776	2.90
1% or more	~	67,689	67,689	3.92

~Not applicable. Data represent a complete enumeration based on the 2019 Census of Jails.

Source: Bureau of Justice Statistics, Census of Jails, 2019; Annual Survey of Jails, 2020; and USAFacts.org.

APPENDIX TABLE 12

Number of persons under jail supervision outside of jail, by size of jail jurisdiction, region, and county COVID-19 infection rate, midyear 2019 and midyear 2020

	Percent of jail jurisdictions that supervised persons outside of a jail ^a		Persons supervised outside of jail ^a		Change	
	2019*	2020	2019*	2020	Number	Percent
Total	14.6%	19.2% †	38,700	50,100 †	11,400	29.5%
Jail jurisdiction size (ADP)^b						
Less than 50 inmates	5.1%	13.7% †	400	800	400	101.0%
50-99	11.4	17.0	500	1,200	700	129.3
100-249	15.7	15.7	2,300	1,600	-700	-29.9
250-499	21.4	25.8 †	5,300	5,500	200	3.6
500-999	29.3	29.3	5,900	8,300 †	2,400	40.3
1,000-2,499	44.9	45.6	9,700	14,500 †	4,700	48.7
2,500 or more	61.3	59.3	14,500	18,100 †	3,600	25.1
Region						
Midwest	12.6%	15.8%	6,100	8,300 †	2,200	35.5%
South	11.6	15.8	17,000	24,500 †	7,500	44.2
West	23.8	33.3	13,300	14,300	900	7.0
Northeast	26.4	35.8	2,300	3,000	800	34.7
County residents' confirmed infection rate through June 30, 2020^c						
Less than 0.2%	12.6%	20.1% †	3,700	3,200	-500	-12.8%
0.2%-0.39%	13.9	15.4	5,100	5,000	-100	-2.9
0.4%-0.59%	15.5	16.7	5,500	8,400 †	3,000	53.9
0.6%-0.99%	18.4	20.9	17,300	21,700 †	4,400	25.7
1% or more	15.8	23.9	7,100	11,700 †	4,600	64.8

Note: See appendix table 13 for standard errors.

*Comparison year.

†Difference with comparison year is significant at the 95% confidence level.

^aIncludes unconfined persons on the last weekday in June who were under jail supervision in programs outside of jail, including electronic monitoring, home detention, day reporting, community service, alcohol or drug treatment programs, and other pre-trial supervision and work programs. Excludes persons supervised by a probation or parole agency.

^bBased on the average daily population (ADP) from July 2018 to June 2019 to compare change in size category since 2019.

^cConfirmed COVID-19 cases per 100 county residents through June 30, 2020.

Source: Bureau of Justice Statistics, Census of Jails, 2019; Annual Survey of Jails, 2020; and USAFacts.org.

APPENDIX TABLE 13

Standard errors for appendix table 12: Number of persons under jail supervision outside of jail, by size of jail jurisdiction, region, and county COVID-19 infection rate, midyear 2019 and midyear 2020

	Percent of jail jurisdictions that supervised persons outside of a jail		Persons supervised outside of a jail		Change	
	2019	2020	2019	2020	Number	Percent
Total	~	1.70%	~	2,263	2,263	5.85%
Jail jurisdiction size (ADP)						
Less than 50 inmates	~	3.67%	~	367	367	87.09%
50-99	~	4.92	~	553	553	101.63
100-249	~	2.94	~	530	530	23.14
250-499	~	2.11	~	954	954	18.09
500-999	~	1.46	~	643	643	10.88
1,000-2,499	~	1.01	~	728	728	7.47
2,500 or more	~	2.11	~	1,656	1,656	11.43
Region						
Midwest	~	3.16%	~	919	919	15.10%
South	~	2.14	~	1,684	1,684	9.91
West	~	5.46	~	1,124	1,124	8.43
Northeast	~	7.62	~	678	678	30.06
County residents' confirmed infection rate through June 30, 2020						
Less than 0.2%	~	3.52%	~	648	648	17.61%
0.2%-0.39%	~	3.01	~	844	844	16.55
0.4%-0.59%	~	3.00	~	699	699	12.76
0.6%-0.99%	~	4.18	~	1,586	1,586	9.18
1% or more	~	4.58	~	1,133	1,133	15.91

~Not applicable. Data represent a complete enumeration based on the 2019 Census of Jails.

Source: Bureau of Justice Statistics, Census of Jails, 2019; Annual Survey of Jails, 2020; and USAFacts.org.



The Bureau of Justice Statistics of the U.S. Department of Justice is the principal federal agency responsible for measuring crime, criminal victimization, criminal offenders, victims of crime, correlates of crime, and the operation of criminal and civil justice systems at the federal, state, tribal, and local levels. BJS collects, analyzes, and disseminates reliable statistics on crime and justice systems in the United States, supports improvements to state and local criminal justice information systems, and participates with national and international organizations to develop and recommend national standards for justice statistics. Doris J. James is the acting director.

This report was written by Todd D. Minton, Zhen Zeng, and Laura M. Maruschak. E. Ann Carson, Emily Buehler, and Danielle Kaeble verified the report.

David Fialkoff and Edrienne Su edited the report. Carrie Epps-Carey produced the report.

March 2021, NCJ 255888



NCJ 255888

Office of Justice Programs
Building Solutions • Supporting Communities • Advancing Justice
www.ojp.gov